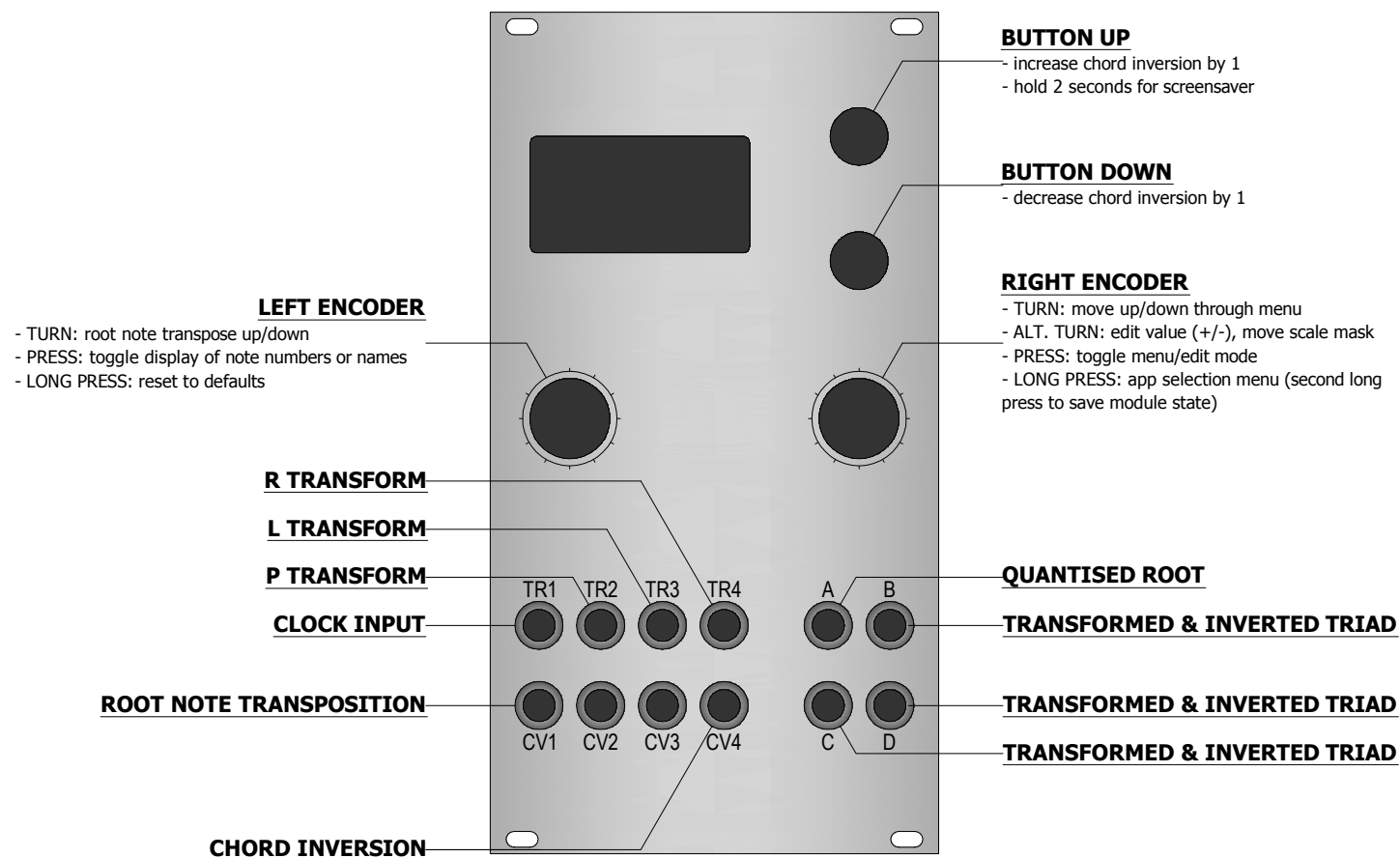


COPIER MASCHINE

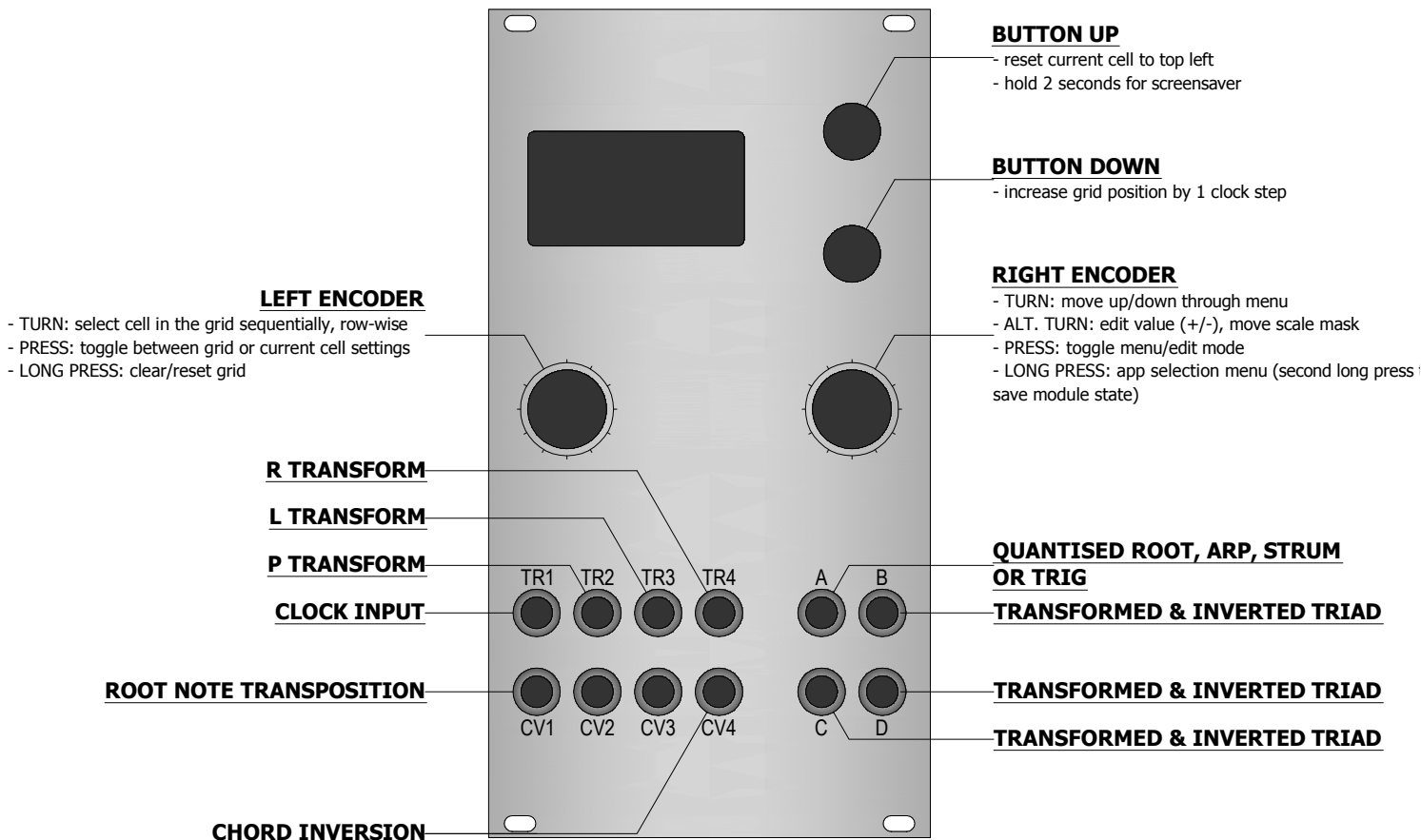
4 STAGE ANALOG SHIFT REGISTER



HARRINGTON 1200

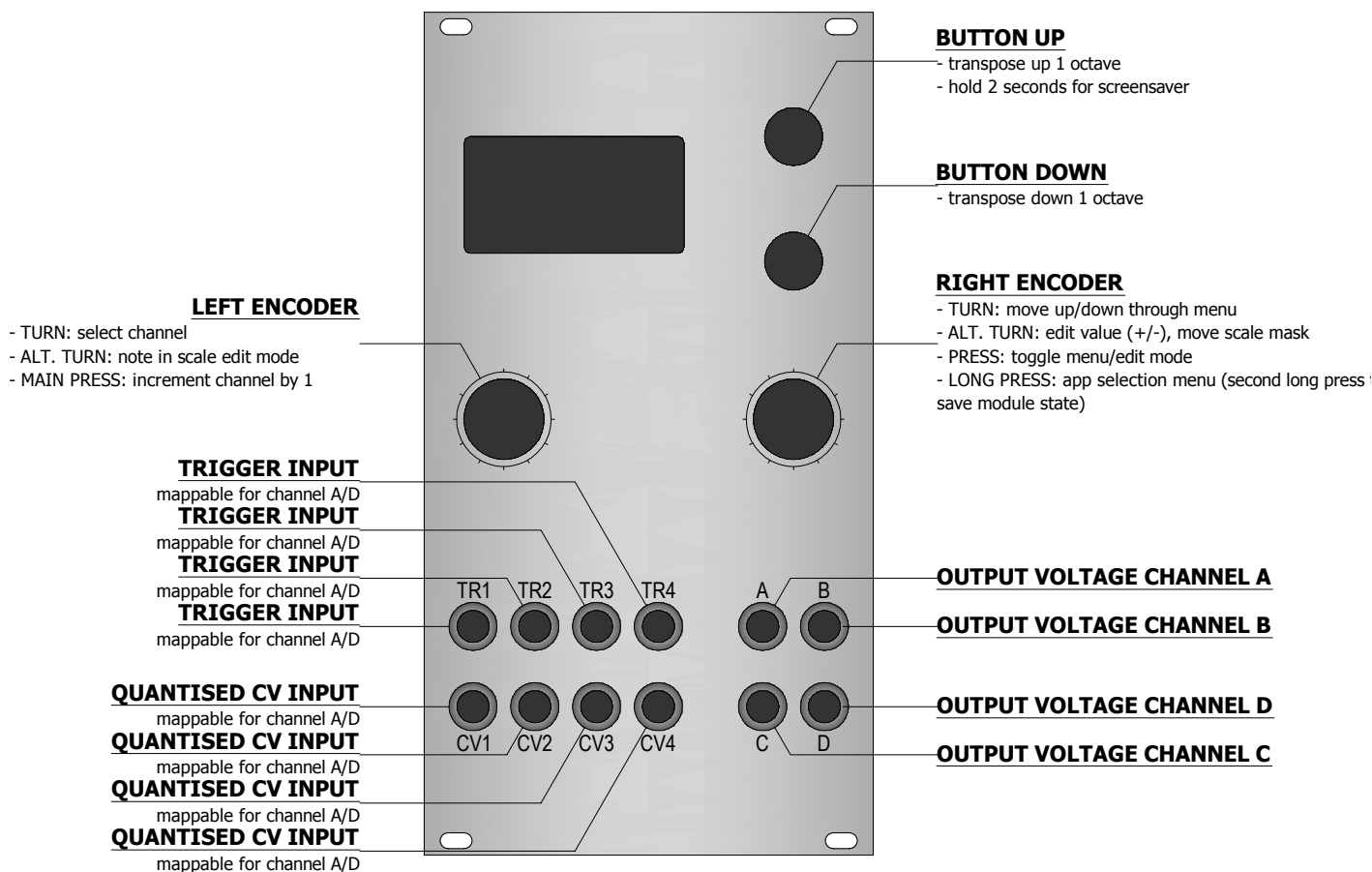
NEO-RIEMANNIAN TRANSFORMATIONS

Firmware 1.2



AUTOMATONNETZ

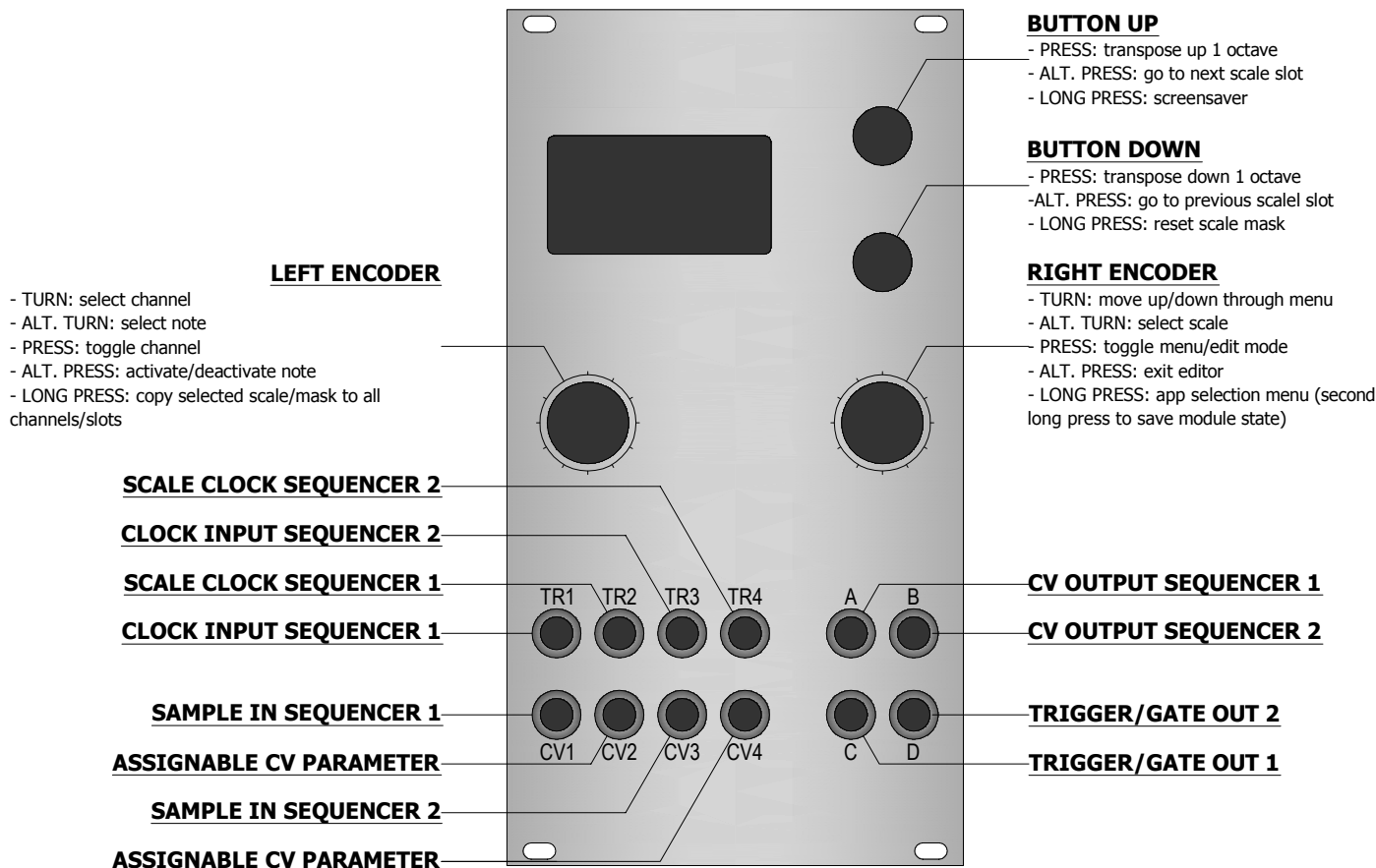
NEO-RIEMANNIAN TRANSFORMS ON 5x5 GRID



QUANTERMAIN

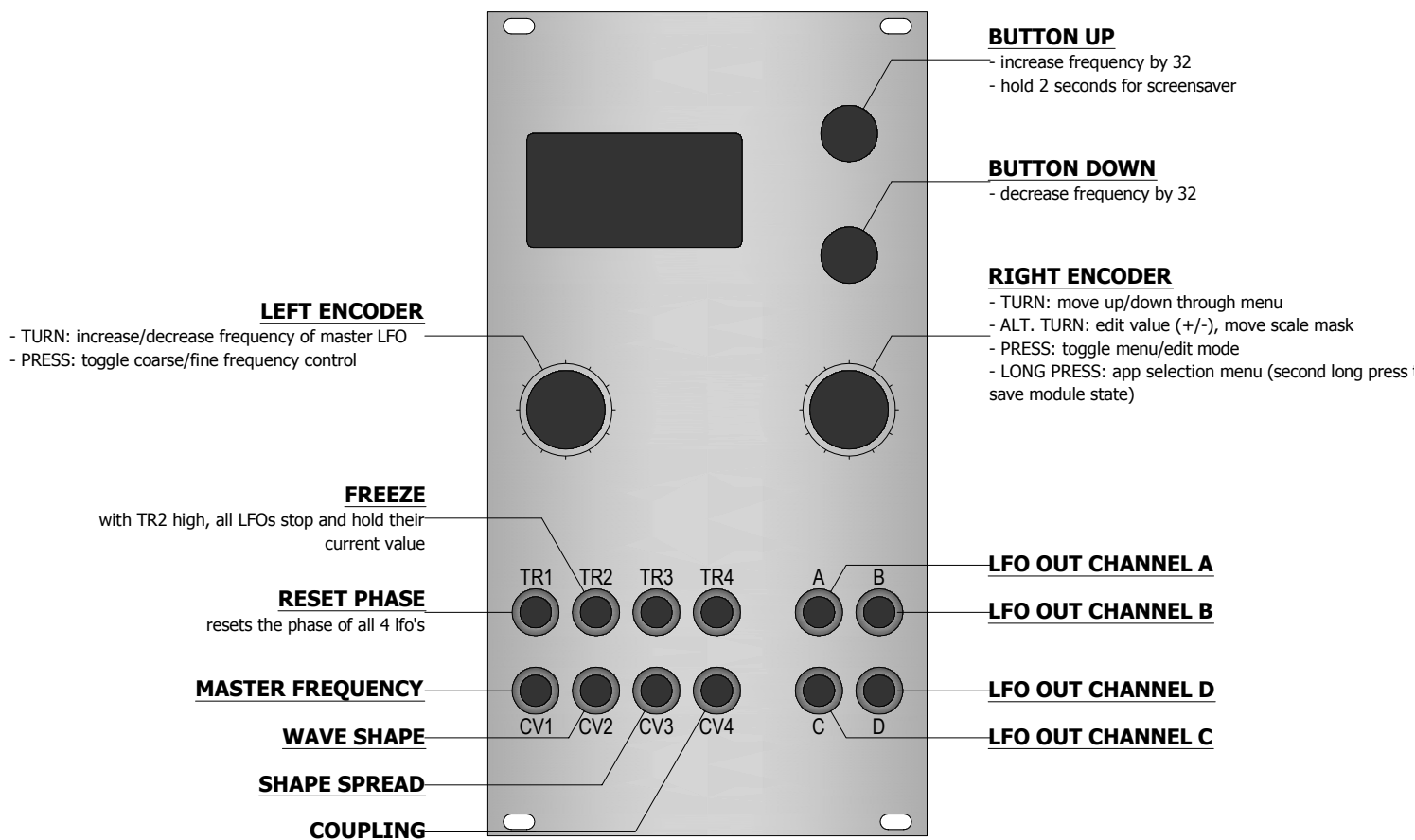
4 CHANNEL QUANTISER

Firmware 1.2



META-Q

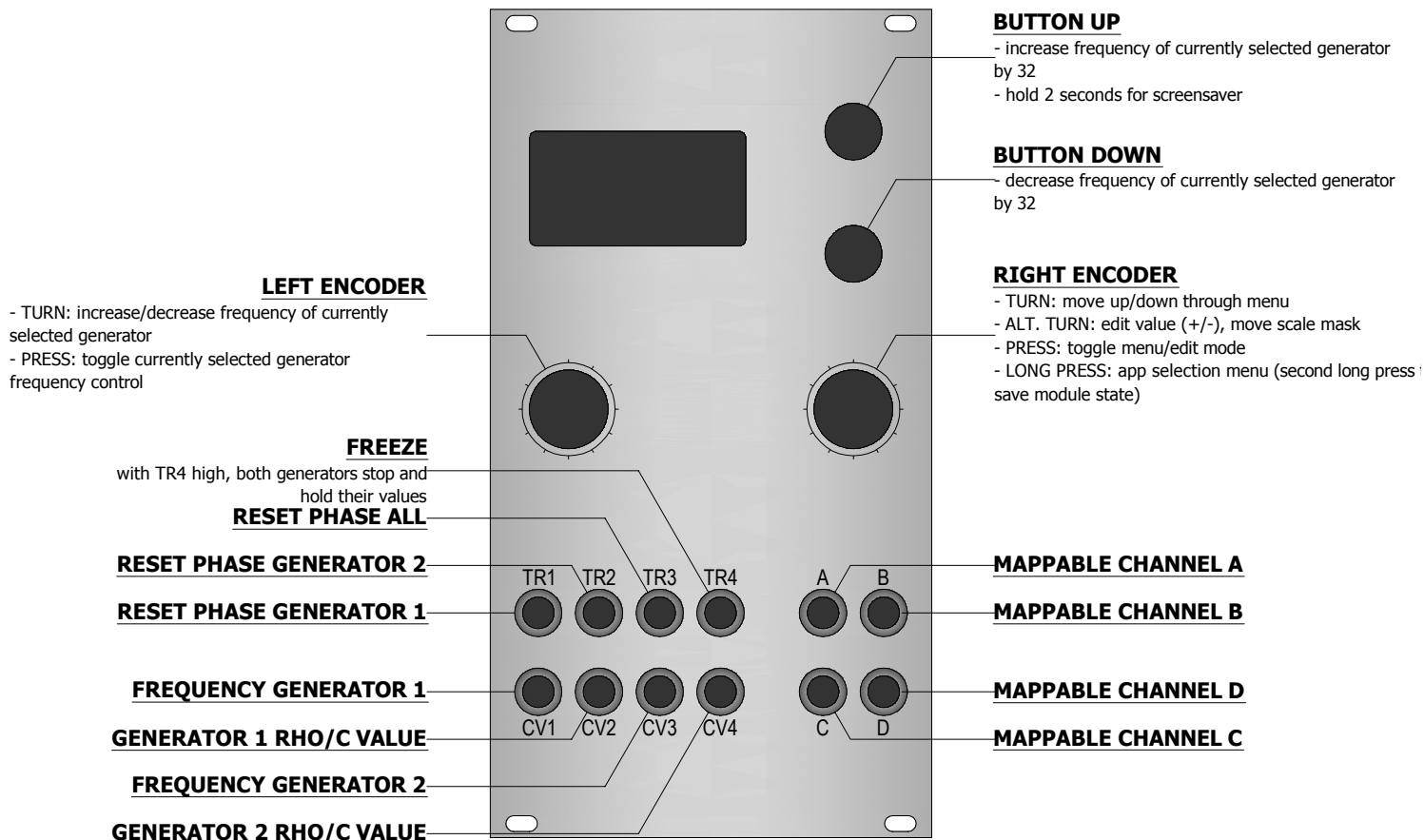
DUAL CHANNEL QUANTISER



QUADRATURIA

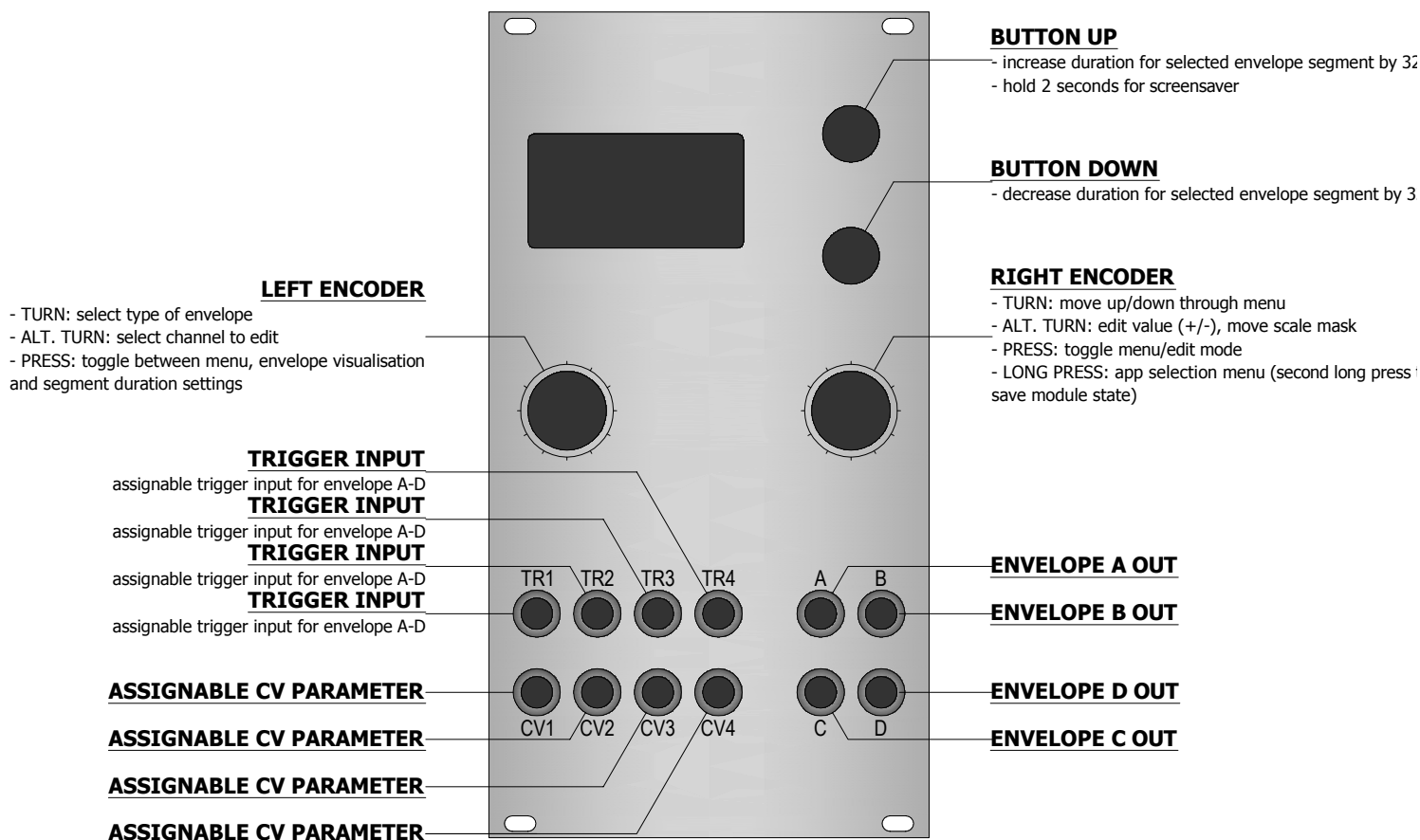
QUADRATURE WAVETABLE LFO

Firmware 1.2



LOW-RENTS

DUAL LORENZ ATTRACTOR



PIQUED

QUAD TRIGGERABLE ENVELOPES

Firmware 1.2

- IN SEQUENCE EDITOR**
- LEFT ENCODER LONG PRESS: copy selected pattern
 - DOWN BUTTON LONG PRESS: paste previously copied sequence
 - LEFT ENCODER + DOWN BUTTON LONG PRESS: clear sequence

LEFT ENCODER

- TURN: select channel
- ALT. TURN: select note
- PRESS: toggle channel
- ALT. PRESS: activate/deactivate note
- LONG PRESS: copy selected scale to other channel

ASSIGNABLE SEQUENCER 2

aux clock input 2 / reset/mute 2

CLOCK INPUT SEQUENCER 2

ASSIGNABLE SEQUENCER 1

aux clock input 1 / reset/mute 1

CLOCK INPUT SEQUENCER 1

ASSIGNABLE CV PARAMETER

ASSIGNABLE CV PARAMETER

ASSIGNABLE CV PARAMETER

ASSIGNABLE CV PARAMETER

BUTTON UP

- PRESS: return to main menu
- ALT. PRESS: go to next sequence
- LONG PRESS: screensaver

BUTTON DOWN

- PRESS: return to main menu
- ALT. PRESS: go to previous sequence
- LONG PRESS: reset scale mask

RIGHT ENCODER

- TURN: move up/down through menu
- ALT. TURN: increase/decrease value/pitch (push turn to finetune pitch)
- PRESS: toggle menu/edit mode
- ALT. PRESS: exit editor
- LONG PRESS: app selection menu (second long press to save module state)

CV OUTPUT SEQUENCER 1

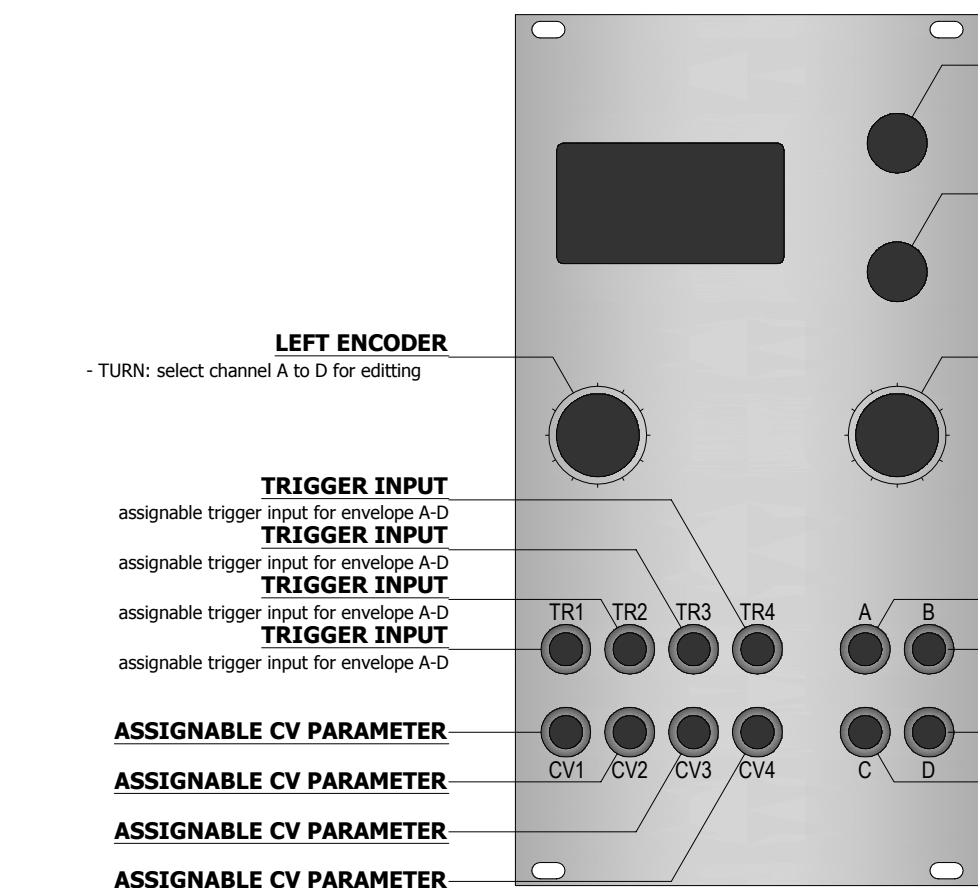
CV OUTPUT SEQUENCER 2

AUX OUTPUT SEQUENCER 2

AUX OUTPUT SEQUENCER 1

SEQUINS

DUAL CHANNEL SEQUENCER



LEFT ENCODER

- TURN: select channel A to D for editing

TRIGGER INPUT

assignable trigger input for envelope A-D

TRIGGER INPUT

assignable trigger input for envelope A-D

TRIGGER INPUT

assignable trigger input for envelope A-D

TRIGGER INPUT

assignable trigger input for envelope A-D

ASSIGNABLE CV PARAMETER

ASSIGNABLE CV PARAMETER

ASSIGNABLE CV PARAMETER

ASSIGNABLE CV PARAMETER

BUTTON UP

- increase gravity by 32
- hold 2 seconds for screensaver

BUTTON DOWN

- decrease gravity by 32

RIGHT ENCODER

- TURN: move up/down through menu
- ALT. TURN: edit value (+/-), move scale mask
- PRESS: toggle menu/edit mode
- LONG PRESS: app selection menu (second long press to save module state)

ENVELOPE A OUT

ENVELOPE B OUT

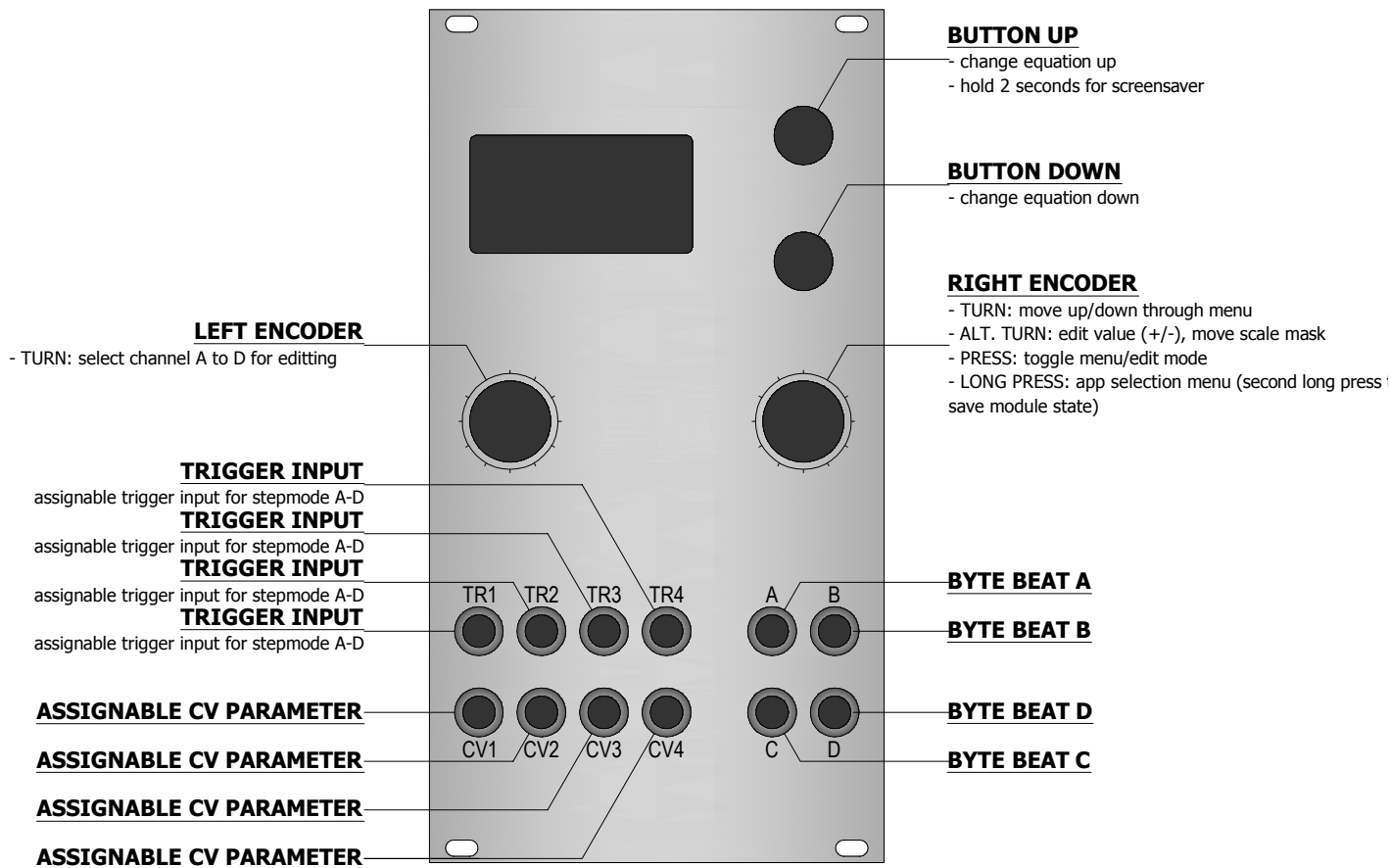
ENVELOPE D OUT

ENVELOPE C OUT

DIALECTIC PING PONG

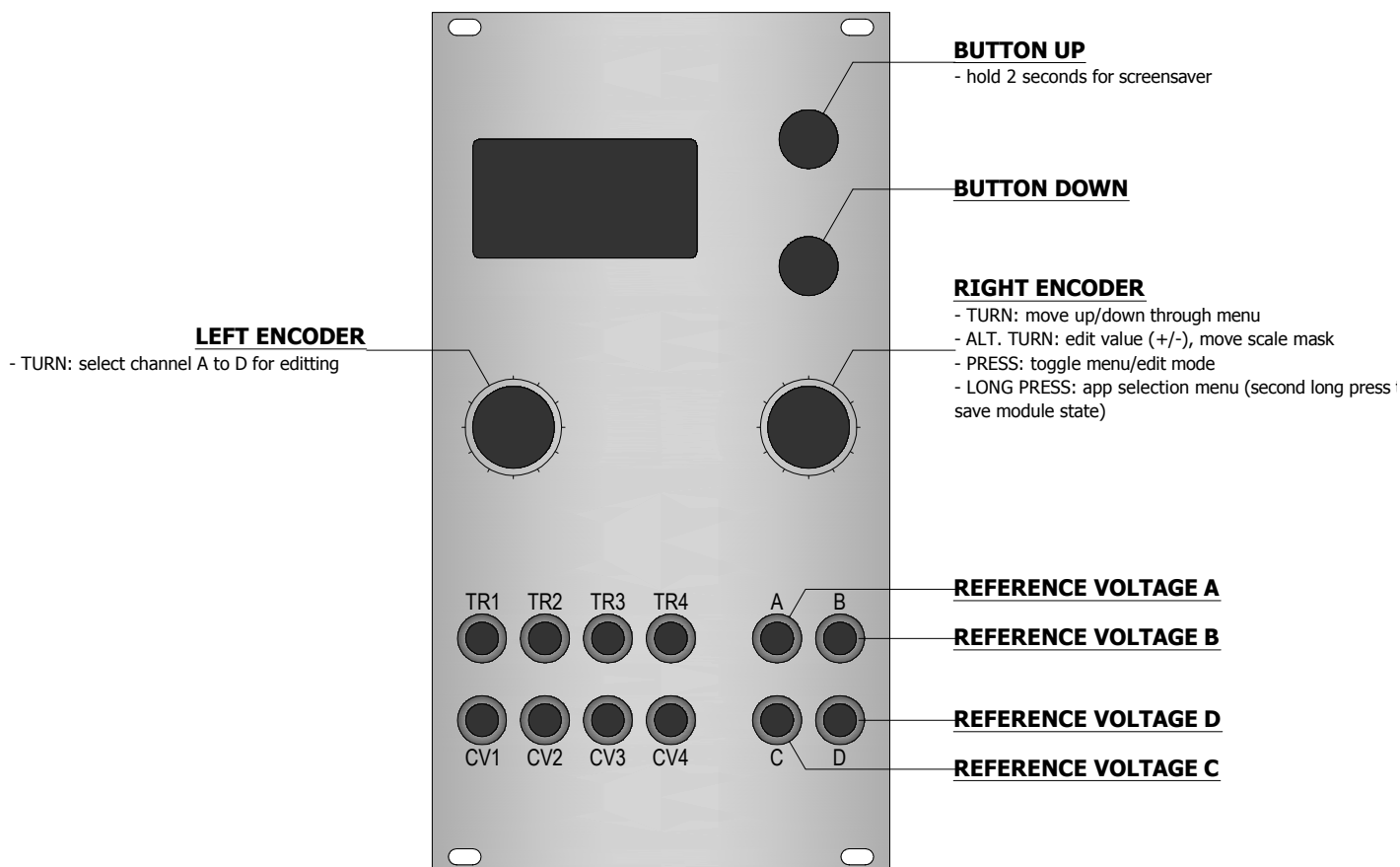
QUAD TRIGGERABLE BOUNCING BALL SIMULATOR

Firmware 1.2



VIZNUTCRACKER, SWEET!

BYTE BEATS SIGNAL GENERATOR



REFERENCES

FIXED REFERENCE VOLTAGES